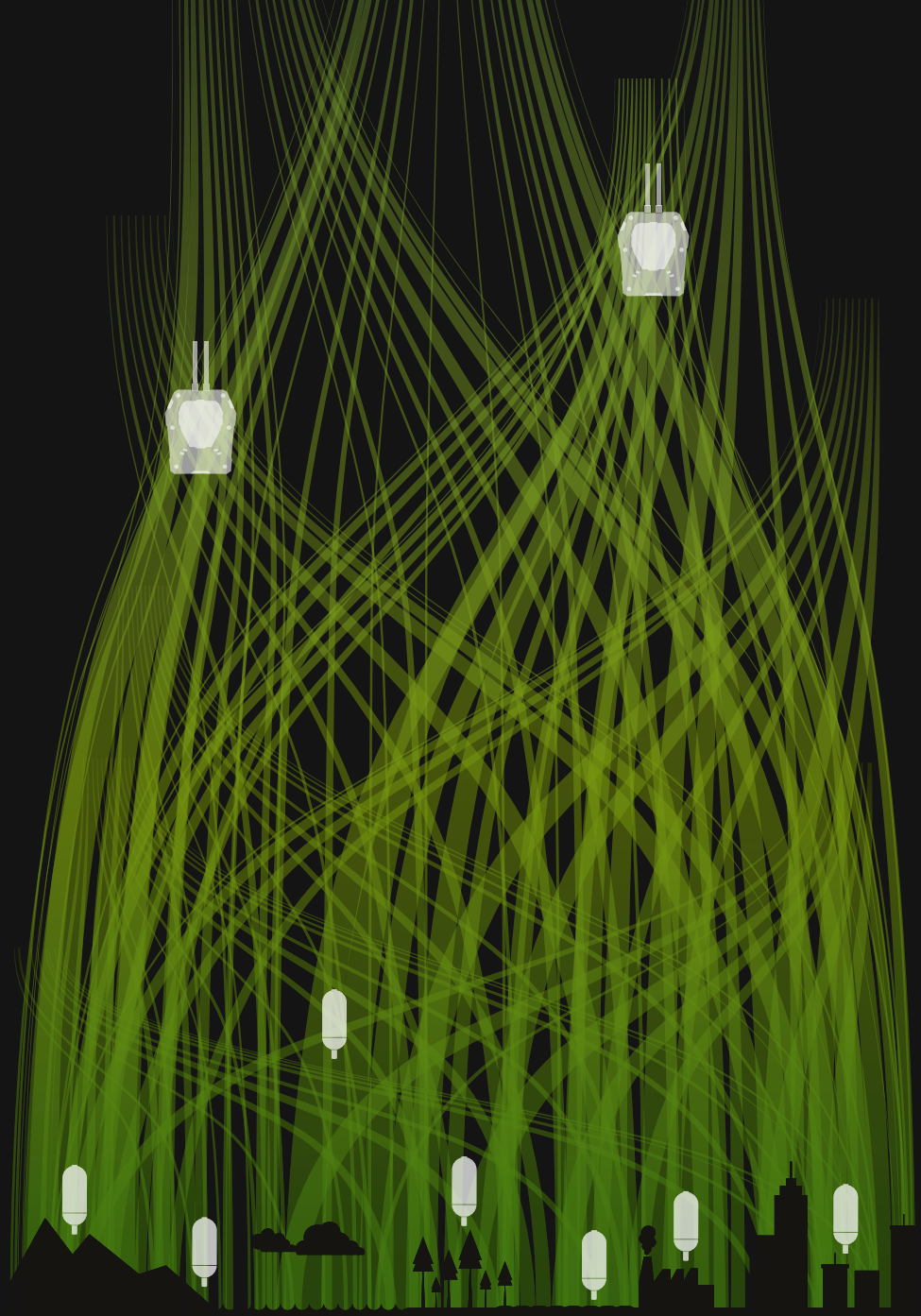
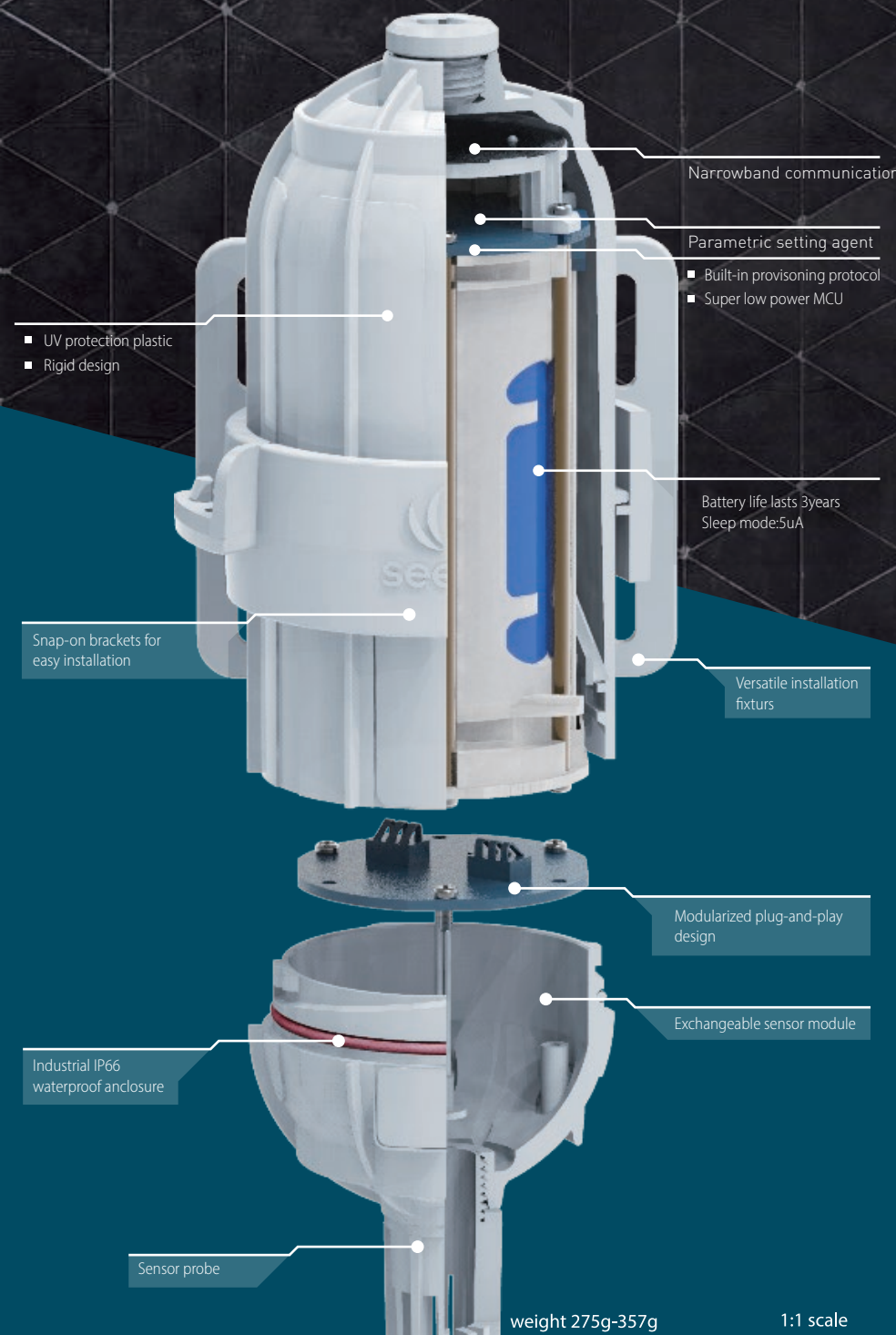




Agile solution to jumpstart IoT

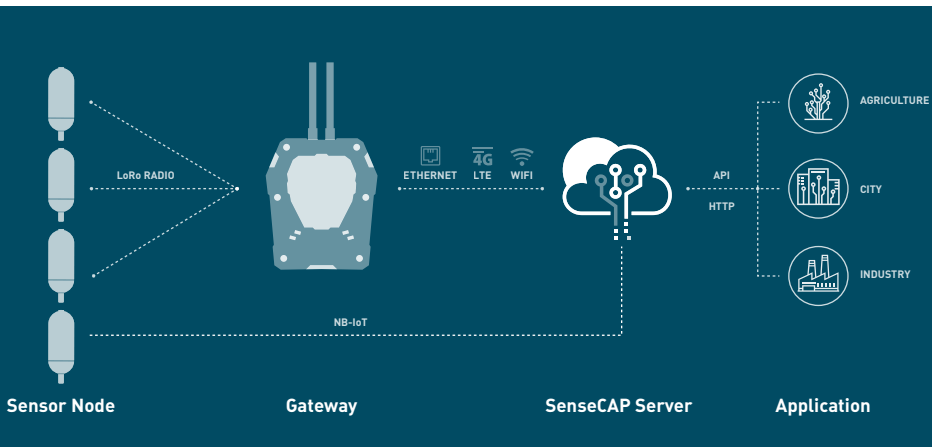


SenseCAP



Start contacting us for all your needs!

System Architecture

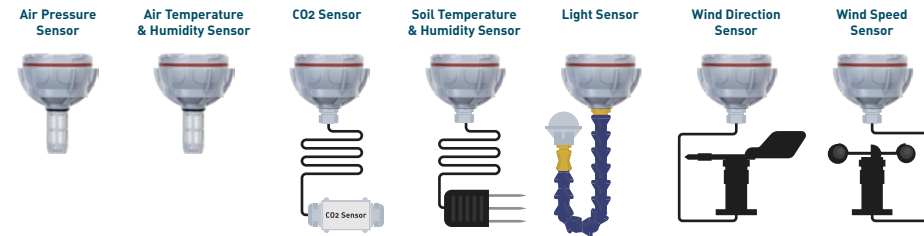
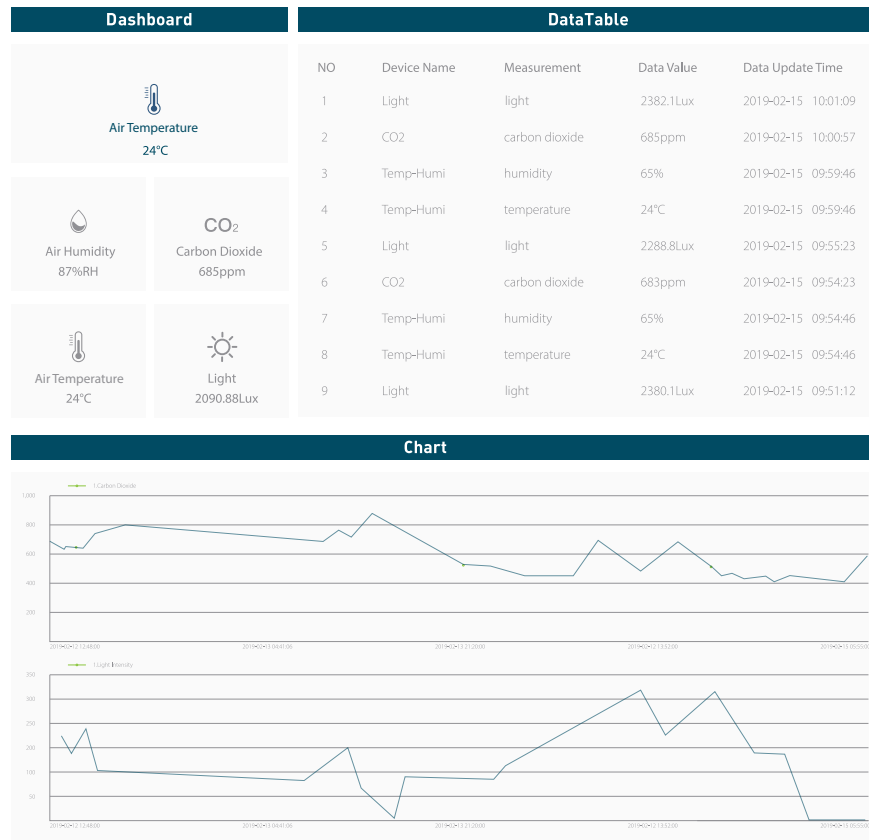


Sensor Capsule Specifications

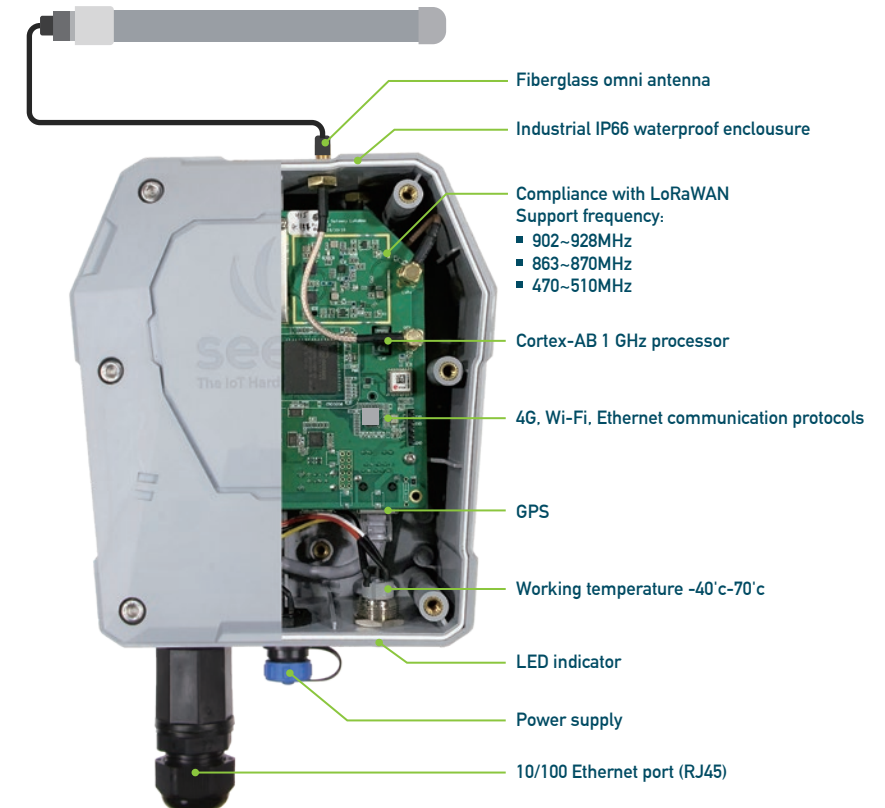
SENSORS	SPECIFICATIONS	MEASUREMENT ACCURACY(TPY)
SenseCAP Air Temp&Humi Sensor	-40~90°C 0~ 100%RH	± 0.30 ± 2%RH
SenseCAP SoilTemp&Humi Sensor	-30~70°[0~100%RH	± 0.2°c ± 2%RH(0%-50%)
SenseCAP Air Pressure Sensor	300~ 11 00hPa	± 1hPa (950hPa~ 1 0S0hPa) [0°C~40°C]
SenseCAP CO2 Sensor	400~ 1 0000ppm	± 30ppm+3%
SenseCAP Light Sensor	Max 188000Lux	0.045Lux/LSB
SenseCAP Wind Speed Sensor	0~60m/s	0.125m/s
SenseCAP Wind Direction Sensor	8 Directions	45°

More sensors will be coming soon

Integrated Provisioning



Gateway Ready for Edge



API services

- Based on Microsoft Azure and The Things Network LoRaWAN services
- Provide API to get device status and sensor data
- Support WebSocket and MQTT protocol
- Support historical data exporting